

Coral Sea Ultimate Adventures

2007 Price List and Details



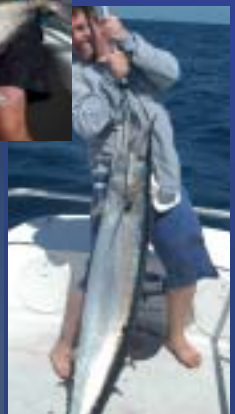
A long way out, in the remote central Coral Sea
There is a spectacular reef system awaiting you
Isolated sand cays & crystal clear tropical reefs
We will fly you out there via floatplane
You'll land to see 6 of the best boats waiting to take
you for the fishing adventure of a lifetime

The Adventure Begins

This is a truly unique fishing adventure, there is absolutely nothing even remotely similar to this available anywhere else in the world. Join us to visit Kenn, Wreck, Marion, Frederick and Flinders Reefs and the Diamond Islets in the Coral Sea. These reefs are located between 350-550 kilometres from the Australian mainland, off the central and northern Queensland coast, and are rarely visited by people.

These reefs have, in the past, been largely inaccessible but visiting them is now a reality due to our range of purpose built boats and seaplane access. Once you arrive, our equipment, tackle, skippers and guides and our locations are simply as good as it gets. We specialise in offering personalised service to small groups of 8-12 anglers, and we take great pride in providing simply the best service available.

You will fish some of most inaccessible seamounts in the Coral Sea, or cast poppers for huge GT's from a guided dory, all based from the comfort of our 80ft mothership, and fishing from our 2 x 35ft sportfishing boats and 3 x 18ft dories. Your adventure starts at Hamilton Island, where you will board a Cessna Caravan floatplane, and be fishing the remote Coral Sea withing an hour of stepping off the plane.



nomad
sportfishing adventures



Coral Sea Ultimate Adventures

2007 Price List and Details



Why you need to do a Coral Sea Ultimate Adventure.

1) Our number one priority is providing you with simply the best fishing trip available. The fishing is of course fabulous, but our equipment, boats, professional crew, attention to detail at all levels, the locations we visit and the highest level of service make a formidable combination to ensure your absolute enjoyment.

2) There is simply nothing like this trip anywhere else in the world. We are the only company in the world that offers fly in access to remote submerged atolls in the middle of the ocean and then provides you an 80ft mothership and a range of 4 sportfishing boats from 18-36ft to fish from, while you are there.

3) The fishing at the reefs we access is simply spectacular. Few people have ever even been to the reefs we visit, let alone fished there. The reefs are so isolated, remote and pristine that they are home to massive numbers of fish and due to the lack of pressure there are a lot of big fish.

4) The combination of the 36ft sportfishing boats and the 18ft dories allow you to fish every environment at any given location. You can fish the very shallow lagoons for huge GT's on poppers or use the larger sportfishing boats to access remote seamounts for massive dogtooth tuna, wahoo and marlin.

5) Everything you need for your trip is already onboard. Absolutley all the rods/reels and tackle you need is already onboard waiting for you. We only use the best Shimano gear(Stella's, Torsa's and Tiagra's) so you can simply arrive with a bag of clothes and let us take care of the rest.



nomad
sportfishing adventures



Coral Sea Ultimate Adventures

2007 Price List and Details



Package Prices

Our package including 6 days fishing with a shared air conditioned cabin aboard our 80ft mothership. Both packages include all flights ex Hamilton Island. Please check the next page for dates available at certain Reefs. Please email us for full pricing on these trips.

There are only 4 cessna caravan floatplanes on the east Australian Coast. 2 of these are at Hamilton Island. Therefore, we operate 2 floatplanes from Hamilton Island and use this as the base to access all Coral Sea Reefs.

Coral Sea Tackle Kit is \$400, please see the Coral Sea 2007 info sheet for details. Please see the Coral Sea 2007 info sheet for full details of inclusions/extras on trips. Costs are different at certain reefs due to different distances to reefs. All trips use our 2 sportfishing boats and 2-3 dories. All Coral Sea Ultimate Adventures are essentially the same apart from the reefs visited.

Fishing is shared between 2 sportfishing boats and 2 dories, with a maximum of 3 or 4 anglers per sportfishing boat (number in sportfishing boats depends on which trip option is taken) and 2 anglers plus a guide in each dory.

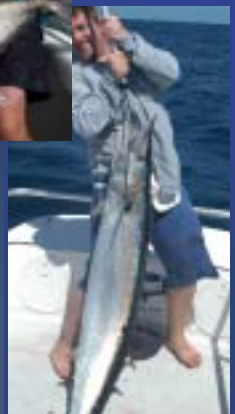
Further Information

A strict luggage limit of 20kg/person applies for the floatplane trip out to the reef(all trips). Guests requiring more luggage will need to send it to the vessel before departure from the harbour. Jigging and casting rods are all supplied and we have a range of top quality Shimano tackle to choose from. You can contact Damon or Claire for information.

(+617) 418182955 - cellular phone International callers

0418182955 - cellular phone Australian callers

info@nomadsportfishing.com.au - email



nomad
sportfishing adventures



Coral Sea Ultimate Adventures

2007 Price List and Details



Dates Available for 2007

Our 2007 dates are scheduled to have you at the right reef at the right time. All our trips can accommodate either sole charters, individuals or small groups. Kenn Reef trips accommodate 10 clients. All other reefs take 12 per trip. The dates for 2007 are as follows:-

Kenn Reef

7th-13th September
13-19th September
19th-25th September

Wreck Reef

9th-15th August
15th-21st August

Frederick Reef

1st-7th September

Holmes/Flinders Reef

24th-30th November
30th Nov-6th December

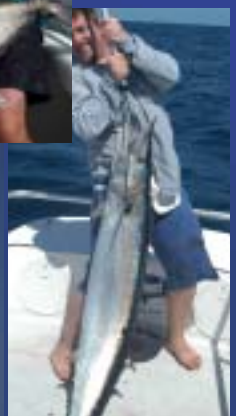
Diamond Islets

6th -12th December
12th-18th December

All of these reefs provide truly untouched fishing. All of the reefs we visit throughout the year provide superb fishing for a range of species. If you are keen on chasing specific species then please ask us about which reef is best, but if you want all round fantastic fishing for a range of species, any of the reefs will be excellent.

For those wanting to catch huge wahoo and lots of them, the trips to Wreck Reef in August 2006 will be sure to impress.

The Flinders/Holmes trips are designed for the serious marlin anglers, and with a number of black marlin close to 1000lbs landed in 2006, these trips are sure to encounter some huge marlin in 2007.



nomad
sportfishing adventures



Coral Sea Ultimate Adventures

2007 Price List and Details



The Fishing

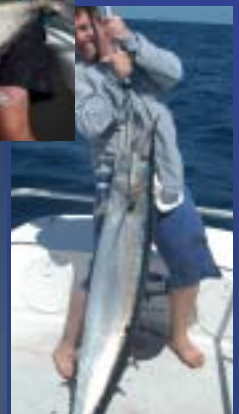
The Coral Sea is home to a huge variety of species. The fishing is truly exceptional, and this is most likely one of the best places in the world to catch many of the species available.

Our trips generally target the larger sportfish that inhabit these waters and you can expect to see huge dogtooth tuna, giant trevally, red bass, wahoo, yellowfin tuna, sailfish, all the pacific marlin species, coral trout, jobfish and many many more. Depending on your fishing preference, we can advise you which reef is best for which species.

We provide all top of the range Shimano rods and reels on all trips, and we simply ask each angler to pay for all lost lures, or purchase them in our tackle shop.

Further Details

- 6 days fishing shared between all boats
- Fly out ex Hamilton Island
- Fish from 2 x 36ft custom gameboats
- One sportfishing boat is a new 36ft Blackwatch
- The other is a "Pirate" Style custom built vessel.
- Also fish from our 3 x 18ft custom dories (some trips 2)
- Air conditioned quad or twin share bunk rooms
- ALL tackle is either provided or available for purchase
- Shimano Casting and jigging tackle all supplied
- Fine dining is catered by our chef and hostess
- All non alcoholic drinks and keg beer supplied
- Spirits, wine and beer can be purchased at our bar
- Non fishing partners can be catered for at special rates
- Flights are aboard Cessna Caravan floatplane
- Scuba diving available with air and nitrox, via onboard compressor and full time dive master. This is included.
- We have an onboard tackle shop which stocks everything you need.

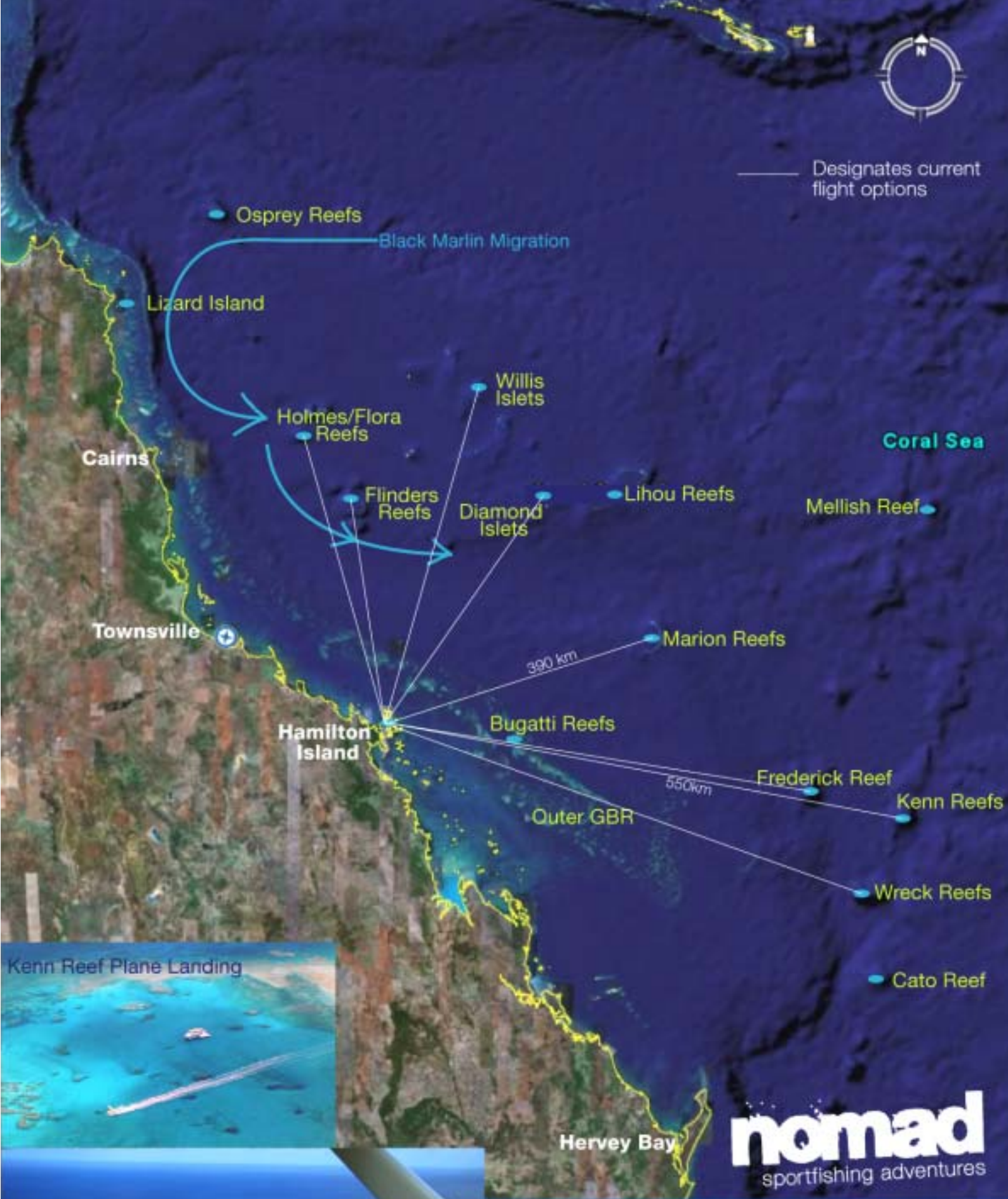


nomad
sportfishing adventures





— Designates current flight options



Kenn Reef Plane Landing



Wreck Reef at anchor

nomad
sportfishing adventures

There is nowhere else in the world that you can experience the type of operation we offer. We are the only operation in the world to offer floatplane access to visit these Coral Sea Atolls. We then provide an 80ft mothership and a fabulous variety of 18-36ft sportfishing boats for use when you arrive. The reefs we visit are totally isolated, unique, pristine environments. The only access is via floatplane, and as such we rarely ever see another boat or person on our trips. This is a totally unique experience.



Coral Sea 2007 Booking Form

Please fill out the details below and fax/mail to us, on the below number, in order to secure your place on one of the 2007 Coral Sea Trips trips with Nomad Sportfishing aboard the luxury 80ft vessel "Odyssey 2".

Name _____
 Home Address _____
 _____ Country _____
 Postcode _____
 Mobile Phone _____ Home Phone: _____
 Email address _____
 Preferred trip date: _____

Group Options (please fill in/circle)
 - I can organise my own group of ____ people
 - I would like to go on a group trip - Yes/No

Travel Requests, Do you want assistance with travel plans? _____

Deposit Payment- Cheque, Visa Card, Bank Card, MasterCard or direct Deposit are acceptable.
 Please circle for Credit Card Payments - **Visa Mastercard Bankcard AMEX**

Name on Card _____
 Exp Date _____ Card Number _____
 Signed _____ Date _____

By completing this form you have formally advised Nomad Sportfishing that you intend to join one of the Adventure trips to the Coral Sea in 2007, the dates as indicated above. Once you have sent this form back, a deposit of 50% of the total trip amount will be payable to reserve your place on these trips. Please fill out the deposit details above or contact us for bank details if you require a direct transfer. Deposits are non refundable, but we will allow you to transfer the date of your trip if there is a legitimate reason. In the case of medical conditions or family emergencies we will obviously make every effort to accommodate your circumstances. Full payment for trips swill be required 4 weeks before departure. Cancellations due to weather or any unforeseen circumstances are possible, but highly unlikely, however we strongly reccomend travel insurance, as we cannot be held liable for any losses as result of a cancelled trip. In the event of a weather cancellation, you will have the option to choose from any other available dates for your trip. We also reccomend medical insurance to cover you in the event of a medivac by plane from the Coral Sea

Credit card transactions will incur an additional fee. Please ask us about this fee, but the maximum fee is 3.2% for AMEX cards This is charged to us by the credit company. International transfers will incur additional bank fees, and these will be deducted from the received amount.

Due to the uncertainty of world oil prices, we are now having to charge a fuel levy on charters if the price of fuel changes too dramatically. If the price of diesel or unleaded fuel goes over \$1.50/litre local price in Australia, we will be charging \$75/person for every 10 cents over \$1.50/litre. You will be notified 4 weeks before your trip if this levy applies.

Nomad Sportfishing Adventures
 21 Whish Street, Windsor, QLD, 4030 Australia
 Ph: (07) 33115012 Ph: (M) 0418 182 955 Fax (07) 33114245
 Web: www.nomadsporfishing.com.au
www.gtffishing.com
 email: info@nomadsporfishing.com.au

